



# Sussex County Multi-Jurisdictional Hazard Mitigation Plan 2025 Update

---

Mitigation Strategy Workshop  
May 8, 2024 | 10:00 am

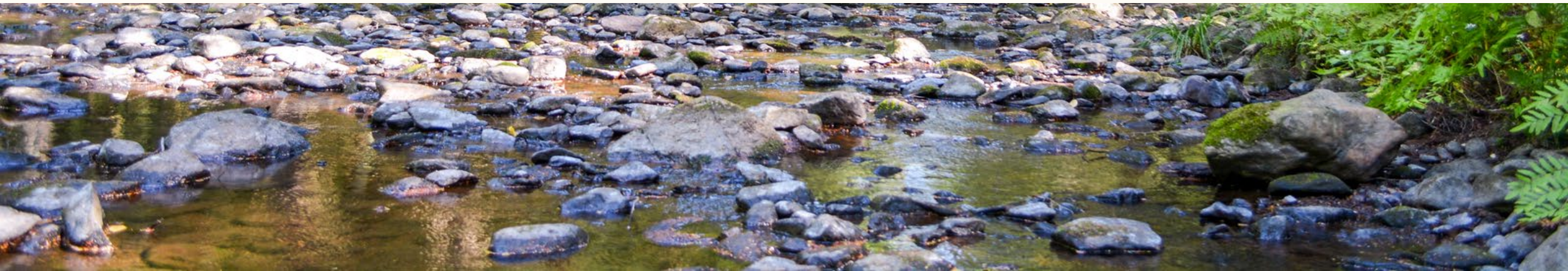
While waiting for the meeting to start, please do not forget to sign in!





# Today's Agenda

1. Identifying and Developing Mitigation Strategies
2. Review Previous Actions
3. Developing New Potential Actions
4. Workshop to Review Previous Actions, Identify New Actions, Complete Municipal Annexes
5. **Check in with Tetra Tech staff before leaving**

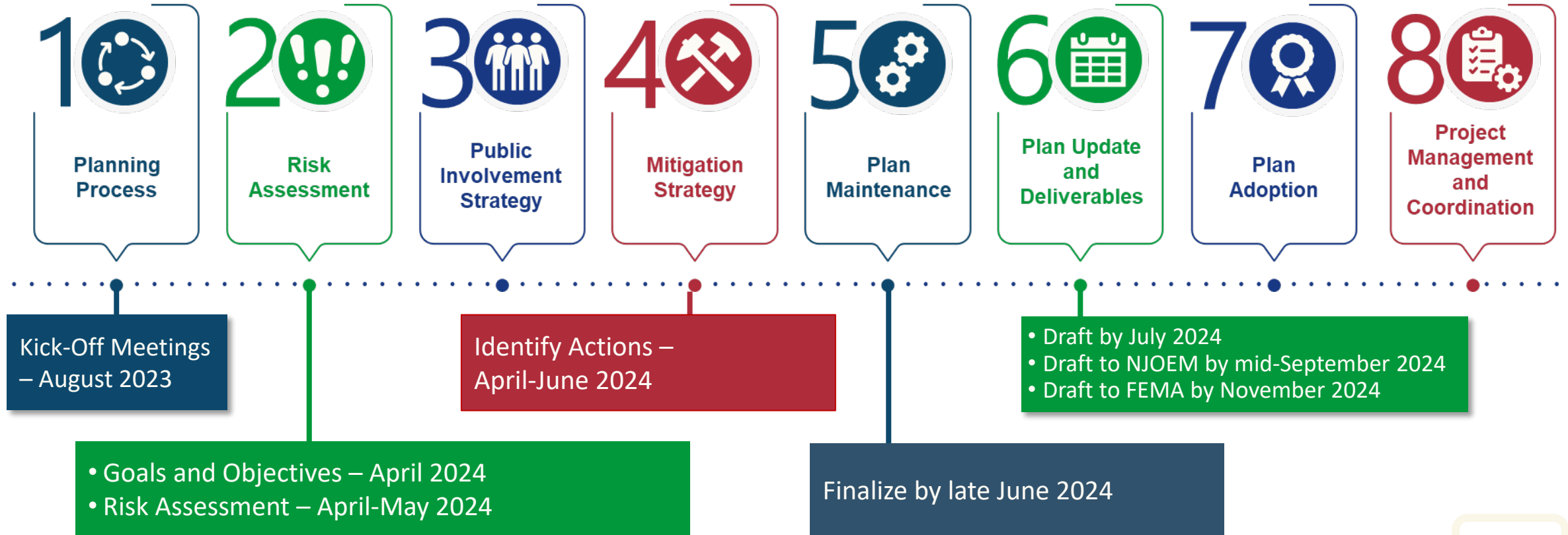






# Project Status

# Schedule



# Identifying and Developing Mitigation Strategies



# Purpose of Mitigation Strategy

- The **Mitigation Strategy** is the County's roadmap to reduce the risk of hazards identified in the HMP. The strategy is based on hazard impacts, asset vulnerability, and the County's capabilities.
- **Mitigation Actions** are specific activities, such as policies, projects, and studies, that stakeholders identify to reduce risk.
  - Forward-looking and incorporate changing conditions for the life of the County's assets
  - Consider changing demographics, development patterns, impacts of climate change.
  - Examples of actions may include elevating electrical and HVAC equipment to reduce the likelihood of damage from floodwaters or planting trees to lower temperatures exacerbated by pavement.
  - ***Actions included in the plan are eligible for certain types of FEMA funding.***



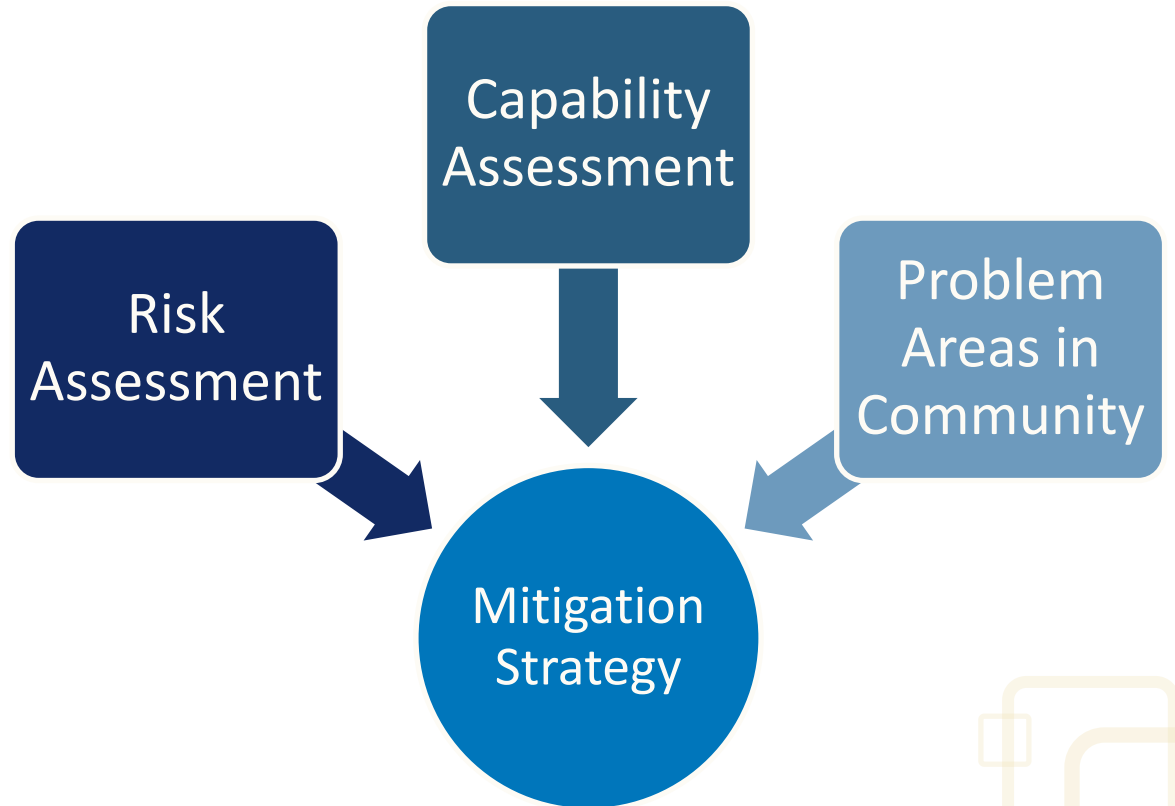
# Using Your Mitigation Strategy to Reduce Risk

- What is a ***Mitigation Strategy***?
  - A group of projects or actions to reduce the impacts of the hazards of concern on your community
    - Plans and Regulations
    - Structure and Infrastructure Studies and Projects
    - Natural Systems Protection Studies and Projects
    - Education and Awareness Programs
- Terms to describe the **Mitigation Strategy** include:
  - **Mitigation Action Plan** or **Action Plan**
  - **Mitigation Projects** or **Initiatives** or **Actions**

Your Mitigation Strategy is included in your annex. Each action will be developed on individual Action Worksheets to include detailed information that can serve as starting points for grant applications and guide implementation

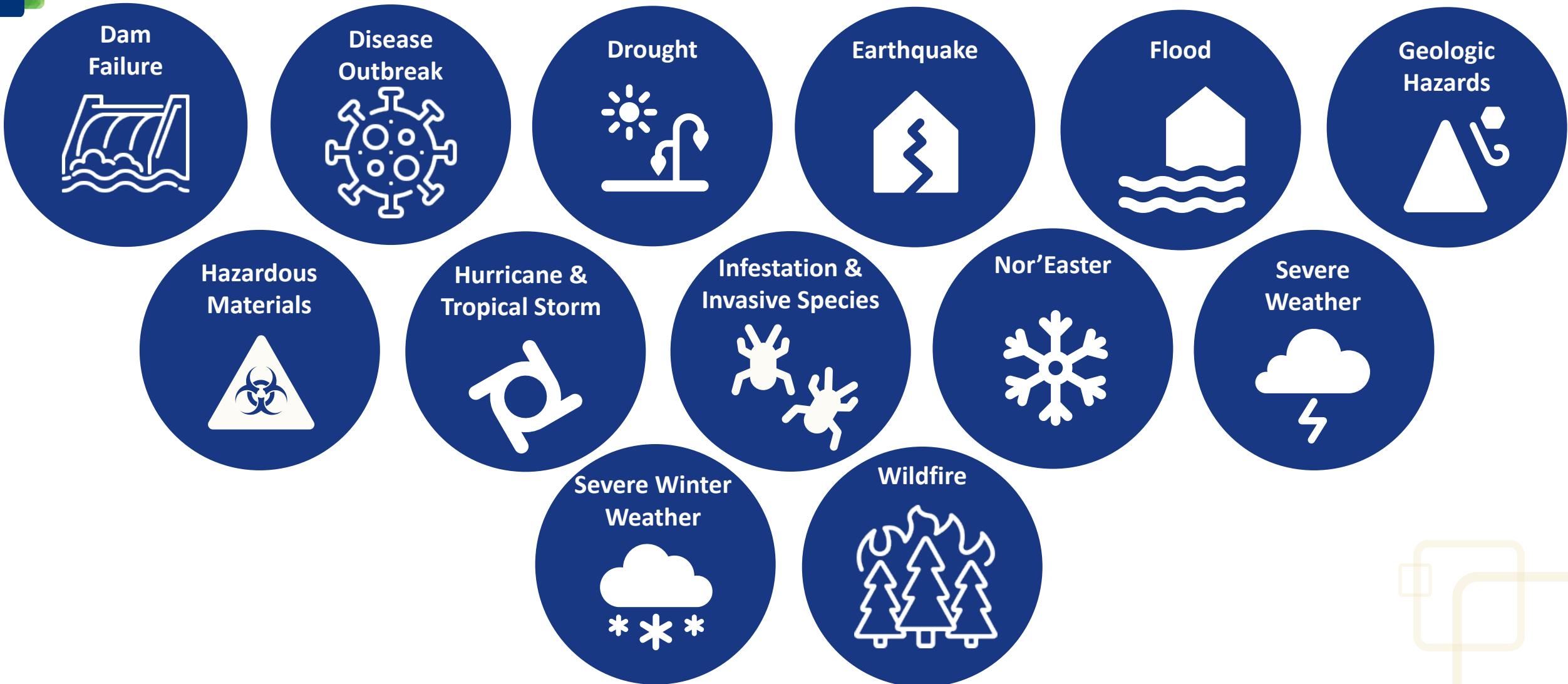
# Connecting to the Mitigation Strategy

- Need a clear connection between vulnerabilities identified in the risk assessment and proposed mitigation actions.
- The capability assessment can provide insight into challenges and opportunities for the mitigation strategy.
- All actions proposed in the mitigation strategy must have a factual basis tied to hazards (*this shouldn't be a wish list!*)



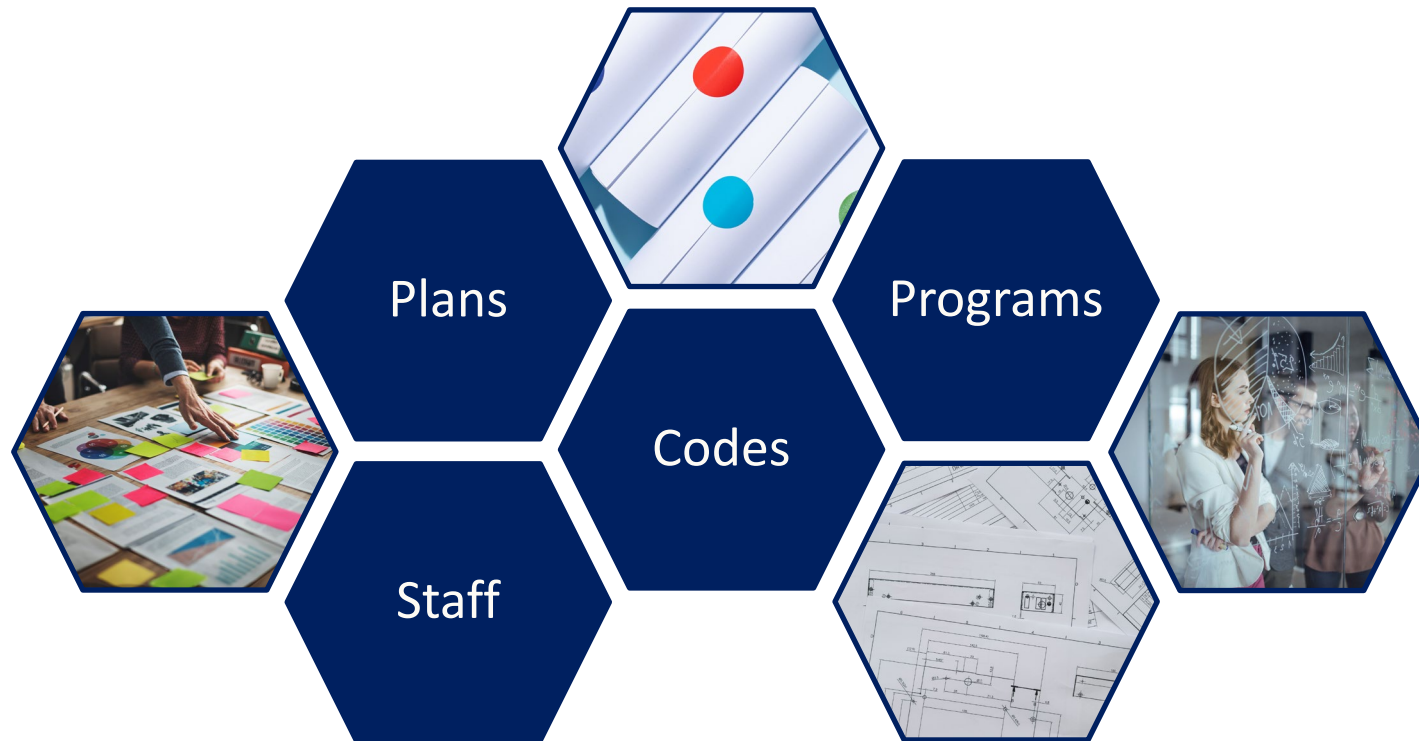


# Hazards of Concern



# Capability Assessment

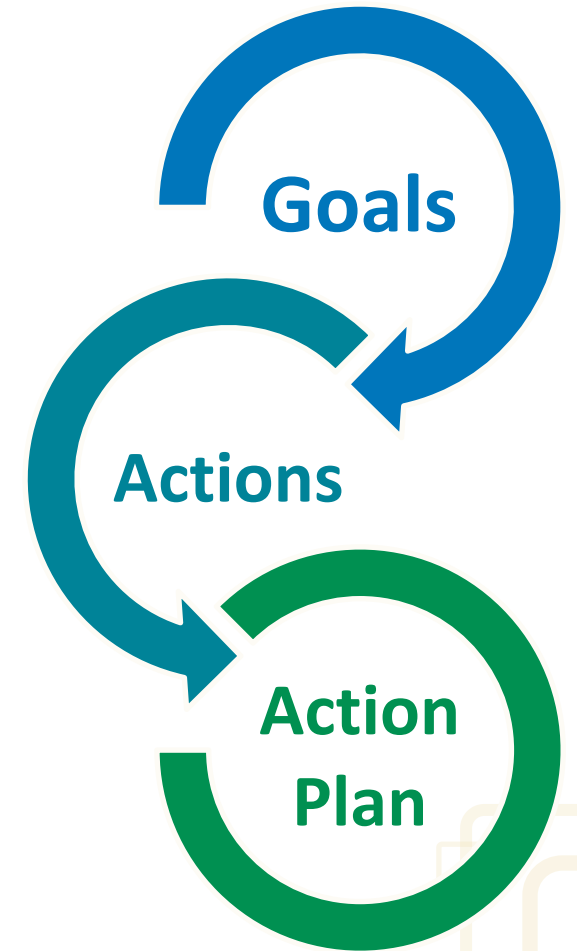
- Capabilities
  - What does your jurisdiction use to reduce risk to hazards?





# Mitigation Strategy

- Goals
  - What outcomes do you want to achieve?
- Actions
  - What specific actions will be taken to reduce hazard risk?
- Action Plan
  - How will the actions be prioritized and implemented?



# 2025 HMP Goals

	Goal
1	Protect life
2	Protect property
3	Promote a sustainable economy
4	Protect the environment
5	Increase public awareness
6	Support continuity of operations pre-, during, and post-hazard events
7	Reduce the risk of natural hazards for socially vulnerable populations and underserved communities



# Review Previous Actions



# Previous Actions Review

If you have not done so:

Review the mitigation actions your jurisdiction identified in the previous HMP by providing a brief status narrative. Begin by providing the status:

- **IN PROGRESS:** Started but not complete
- **ONGOING CAPABILITY:** An action you now complete on a regular basis (maintenance, annual outreach, etc.). These actions will be included in your capabilities moving forward.
- **NO PROGRESS:** Not started
- **COMPLETE:** Finished!

Actions that are **COMPLETE** or **ONGOING** will not be carried forward.

### STATUS OF PREVIOUS MITIGATION ACTIONS

Review the mitigation actions your jurisdiction identified in the previous HMP by providing a brief narrative. Begin by providing a status update for each action listed in your last annex:

- **IN PROGRESS:** Started but not complete
- **ONGOING CAPABILITY:** An action you now complete on a regular basis (maintenance, annual outreach, etc.). These actions will be included in your capabilities moving forward.
- **NO PROGRESS:** Not started
- **COMPLETE:** Finished!

Actions that are **COMPLETE** or **ONGOING** will not be carried forward. Indicate if **NO PROGRESS** or **IN PROGRESS** actions should be carried forward!

Table 3. Status of Previous Mitigation Actions

Project #	Project	Responsible Party	What is the status? (e.g., In Progress, No Progress, Ongoing Capability, or Completed)  Provide details including the funding source, cost, phases completed, obstacles to progress, etc.	If you did not complete the action, should the action be included in the 2024 HMP (i.e., there is still a need, this is still a priority)?		
				Yes/No	If Yes, please describe the original problem (i.e., hazard, location, historic losses), any updates to the action needed.	Hazard(s) of Concern addressed (refer to the hazards on page 1)





## Developing New Potential Actions

# Requirements for the Mitigation Strategy Update

- Quality not quantity
  - Each action needs detailed information on the why, who, what, and when of the action.
- 2021 projects
  - If a project is not finished and still a priority, include in 2025 HMP
  - Remove general projects or make more specific
  - Remove ongoing capabilities like maintenance or annual outreach
- **Each hazard needs at least one mitigation action**
- If your jurisdiction has Repetitive Loss Properties - an action is needed to mitigate the properties (elevation or acquisition) with specifics (street or neighborhood names, not specific addresses)



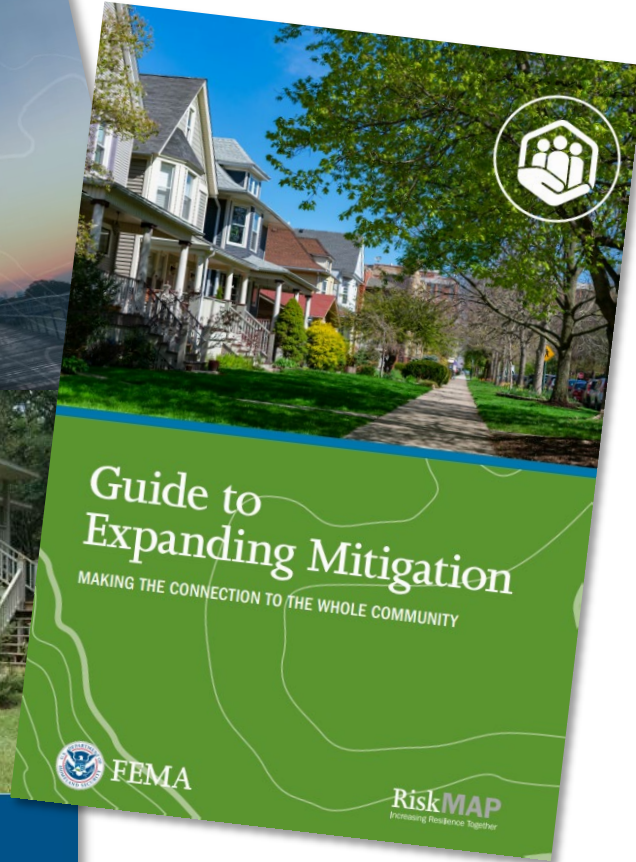
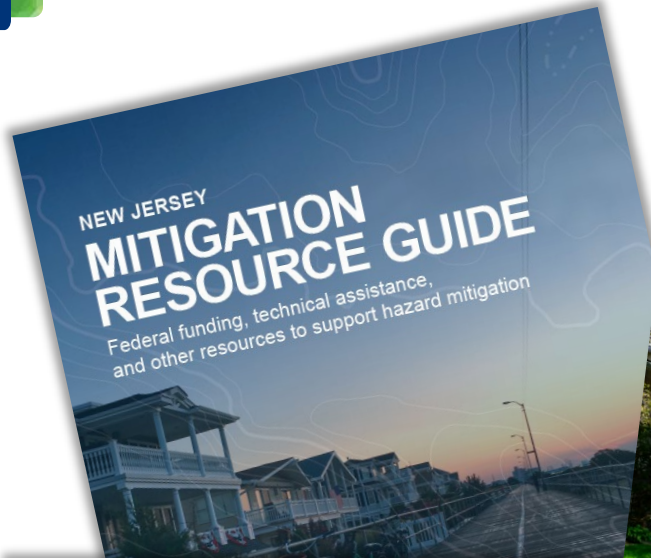
# Where do you need to focus?

- **Stronger connection** between the risk assessment and mitigation strategy
- **More specific, achievable actions**
  - Specific projects, in specific locations, in a specific timeframe
  - Focus on socially vulnerable populations and underserved communities
- **Diverse actions**
  - You need at least **one action per hazard of concern**. Think about actions that can cover multiple hazards.
  - Include a variety of action types (e.g., plans, floodproof critical facilities, outreach programs, etc.)





# Other Mitigation Actions to Consider



## Mitigation Ideas

A Resource for Reducing Risk to Natural Hazards

- Local Disaster Debris Management Plans
- Substantial Damage Management Plan
- Actions to address high-hazard or significant-hazard dams
- Public education and outreach programs
- Generators at critical facilities and community lifelines
- Floodproofing critical facilities and community lifelines
- Addressing repetitive and severe repetitive loss properties

# Mitigation Action Types



**Plans and regulations** include government authorities, policies, or codes that encourage risk reduction, such as building codes and state planning regulations. This may also include planning studies.



**Structure and infrastructure projects** involve modifying existing structures and infrastructure or constructing new structures to reduce the impact of hazards.



**Natural systems protection projects** minimize losses while also preserving or restoring the function of natural systems.



**Education and awareness programs** include long-term, sustained programs to inform and educate citizens and stakeholders about hazards and mitigation options. This category could also include training.

Table 1. Mitigation Action Worksheet

<b>Lead Agency:</b>		
<b>Supporting Agencies:</b>		
<b>Hazard(s) of Concern:</b>		
<b>Description of the Problem:</b>		
<b>Description of the Solution:</b>		
<b>Estimated Cost:</b>		
<b>Potential Funding Sources:</b>		
<b>Implementation Timeline:</b>		
<b>Goals Met:</b>		
<b>Benefits:</b>		
<b>Impact on Socially Vulnerable Populations:</b>		
<b>Impact on Future Development:</b>		
<b>Impact on Critical Facilities/Lifelines:</b>		
<b>Impact on Capabilities:</b>		
<b>Climate Change Considerations:</b>		
<b>Mitigation Category</b>		
<b>CRS Category</b>		
<b>Priority</b>		
<b>Alternatives:</b>	<b>Action</b>	<b>Evaluation</b>





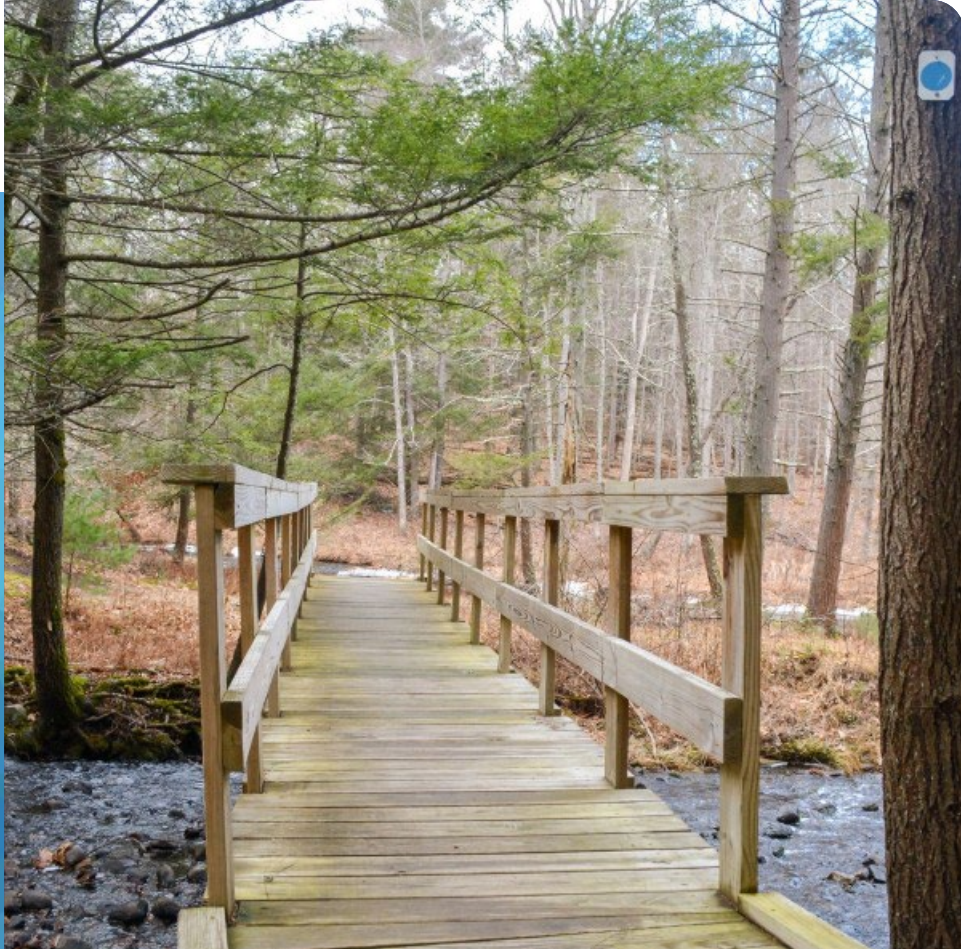
# Next Steps

- **NOW:** Complete your worksheets, ask questions, and provide to Tetra Tech staff
- **NOW:** Provide update to Tetra Tech staff on any missing worksheets, when you will submit them, and how Tetra Tech can assist you
- **AFTER WORKSHOP:** Continue to share information about the HMP Update via social media, community groups, and networks. Let us know who you share information with!
- **NEXT MONTH:** Work with Tetra Tech planners to complete annexes and finalize actions.





**Questions?**



# Workshop

Review previous mitigation actions, identify new actions, complete missing areas in your annex.

**Before you leave, check in with Tetra Tech staff!**



## **Sussex County Project Contacts**

Steven Sugar, Deputy Coordinator  
973-579-0380 x 2531 | [ssugar@sussexcountysheriff.com](mailto:ssugar@sussexcountysheriff.com)

James Aumick, Deputy Coordinator  
973-579-0380 x 2531 | [jaumick@sussexcountysheriff.com](mailto:jaumick@sussexcountysheriff.com)

## **Tetra Tech Project Contacts**

Chris Huch, CFM | Project Manager  
(973) 630-8357 | [chris.huch@tetrattech.com](mailto:chris.huch@tetrattech.com)

Jessica Stokes, MSEM, NJCEM | Lead Planner  
(973) 630-8017 | [jessica.stokes@tetrattech.com](mailto:jessica.stokes@tetrattech.com)



**Thank  
You!**